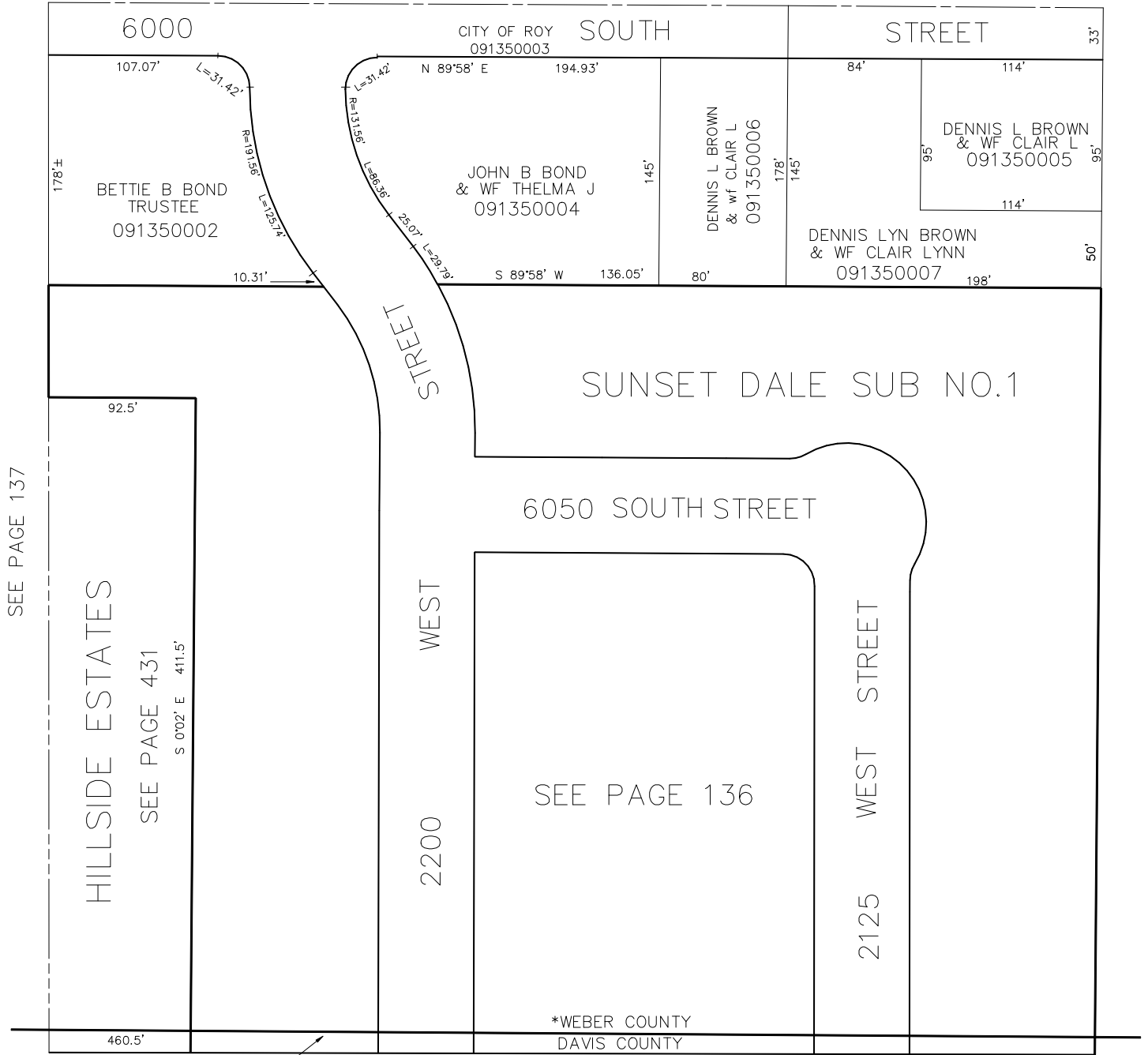


NE 1/4 OF NW 1/4 OF SE 1/4  
SECTION 23, T5N, R2W, S.L.B. & M.

TAXING UNIT: 41

ROY CITY  
SCALE 1" TO 50'

SEE PAGE 107



\*RETRACED WEBER/DAVIS COUNTY LINE  
BK 56 PGS 88-92 E#1885948